

COMPANY NAME:

PHYSICAL ADDRESS:

CITY, STATE & ZIP:

MAILING ADDRESS:

CITY, STATE & ZIP:

PRIMARY COMPANY PHONE NUMBER:

EMAIL:

COMPANY WEBSITE:

BUSINESS CATEGORY:

BRIEF DESCRIPTION OF YOUR BUSINESS:

TODAY'S DATE:

MEMBERSHIP CONTACT NAME:

CONTACT MOBILE NUMBER:

## 2023-2024

### MEMBERSHIP APPLICATION

- COMMUNITY SUPPORTER**  
 NON-PROFIT  
 \$175 (\$750+ VALUE)
- COMMUNITY PARTNER**  
 \$275 (\$800+ VALUE)
- COMMUNITY INFLUENCER**  
 \$500 (\$1,600+ VALUE)
- COMMUNITY LEADER**  
 \$2,500 (\$7,500+ VALUE)
- COMMUNITY CHAMPION**  
 \$10,000 (\$18,000+ VALUE)

- PARTNER LEVEL ACH MONTHLY PAYMENTS \$25
- ADDITIONAL COMMUNITY PARTNER \$100
- ADDITIONAL COMMUNITY INFLUENCER \$250
- ADDITIONAL DIRECTORY/WEBSITE CATEGORY \$25 EACH

- CHECK INCLUDED  
*To Florence Area Chamber of Commerce*
- PAYING BY CREDIT CARD  
*Discover, Mastercard or Visa*
- BILL ME  
*Community Influencer, Leader, or Champion Level*
- QUARTERLY DUES  
*Community Leader or Champion Level*

Download this application at:

[FLORENCECHAMBER.COM/CHAMBER/JOIN](http://FLORENCECHAMBER.COM/CHAMBER/JOIN)

Or mail this form to:

290 HWY 101 - FLORENCE, OREGON 97439

## THE POWER OF THE CHAMBER



## CHAMPIONS FOR A THRIVING COMMUNITY

[FLORENCECHAMBER.COM](http://FLORENCECHAMBER.COM)

[info@florencechamber.com](mailto:info@florencechamber.com)

541-997-3128

### DID YOU KNOW? THE CHAMBER...

- Is the marketing agent for the City of Florence (Print, radio, TV, social media & tourism development based events)
- Contributes an additional \$100,000 in annual tourism marketing
- Has 25,000 website views monthly & the Chamber's social media pages combine for 15,500 followers a month with 3,000 Facebook impressions per day
- Operates the Visitor Center which averages 14,000 walk-ins & 1,500 calls a year which include Chamber business referrals
- Distributes 8,000+ Visitor Guides/Chamber Business Directory annually throughout Oregon and in requested visitor & relocation packets

## THE POWER OF THE CHAMBER BEGINS WITH YOU

### MEMBERSHIP BENEFITS FOR ALL LEVELS

#### COMMUNITY NETWORK & COMMERCE DEVELOPMENT

- Opportunities to attend regularly scheduled Chamber events
- Virtual and in person educational seminars
- Ribbon cutting and milestone event celebration services
- Opportunity to serve on Chamber committees

#### PROMOTION & SPONSORSHIP OPPORTUNITIES

- Listed in both the Chamber's printed & website directory in your desired category with links to your website
- Members preferred customer/visitor referrals to your business
- Enhance your business credibility with Chamber member logo on your door, website & printed materials
- Use of Chamber event/festival logos & photo library for your own marketing
- Use of Chamber bulk mail rates, address lists, and relocation information requests.
- Subscription to exclusive information and opportunities to promote company news in Chamber E-Blast newsletter
- Exclusive members only display of business cards or brochures in Visitor Center
- Host Business After Hours

## UPGRADED LEVELS UPGRADED BENEFITS

### COMMUNITY INFLUENCER LEVEL:

- Enhanced business directory listing on website
- Recognized in select festival/event advertising via newspaper
- Radio spots during select festival promotions
- An extra category listing in print and online Chamber directories & an enhanced listing in printed directories

### COMMUNITY LEADER LEVEL:

- Marketing of your business by including your flyer in visitor & relocation packets
- Banner & KCST on-air recognition during the Rhododendron Grand Floral Parade
- Priority marketing opportunities through Chamber sponsored events and programs.
- Monthly Business Beat listing in the Siuslaw News
- Full page ad up to 5 listings in the Visitor Guide/ Chamber Membership Directory
- Sponsor recognition during annual events plus rotating static slide in Visitor Center promotion video
- Your live linked logo prominently displayed on every page of the Chamber's website
- Four complementary tickets to the Siuslaw Awards

### COMMUNITY CHAMPION LEVEL:



- Unlimited category listings in print & online business directories
- Full page ad in printed business directory
- Your live linked logo prominently featured on every page of the Chamber's website
- Eight complimentary tickets to the Siuslaw Awards

## THE CHAMBER IS HERE TO HELP YOU SUCCEED

### MAX OUT YOUR MEMBERSHIP

#### VISIBILITY



As an active member of our community, you are able to increase your exposure through the Chamber's website, Chamber Blast/E-News, Business After Hours, social media platforms, business directory listings as well as networking events.

#### VOICE



We work hard to inform, educate and advocate on your behalf on the local, county, state and national level. Gain a voice in what happens through our efforts and connections.

#### CREDIBILITY



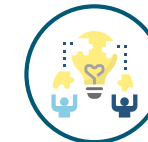
Your membership in the Florence Area Chamber of Commerce will enhance the perceptions of your customers, clients, and business associates.

#### GROWTH



Through business referrals, marketing and vital information sharing, we are working to build a vibrant community for the present and the future.

#### LEARNING



Take advantage of exclusive workshops, information, webinars, and resources only available to Chamber members.

#### CONNECT



Build and strengthen your business network among 350 members and with numerous events each year, created to help build your business and attract new clients

WE WORK HARD FOR YOU AS  
**CATALYSTS, CONVENERS  
& CHAMPIONS!**



BETTINA HANNIGAN

MITZI HATHAWAY

CEO  
&  
PRESIDENT



DIRECTOR OF  
TOURISM  
&  
DEVELOPMENT